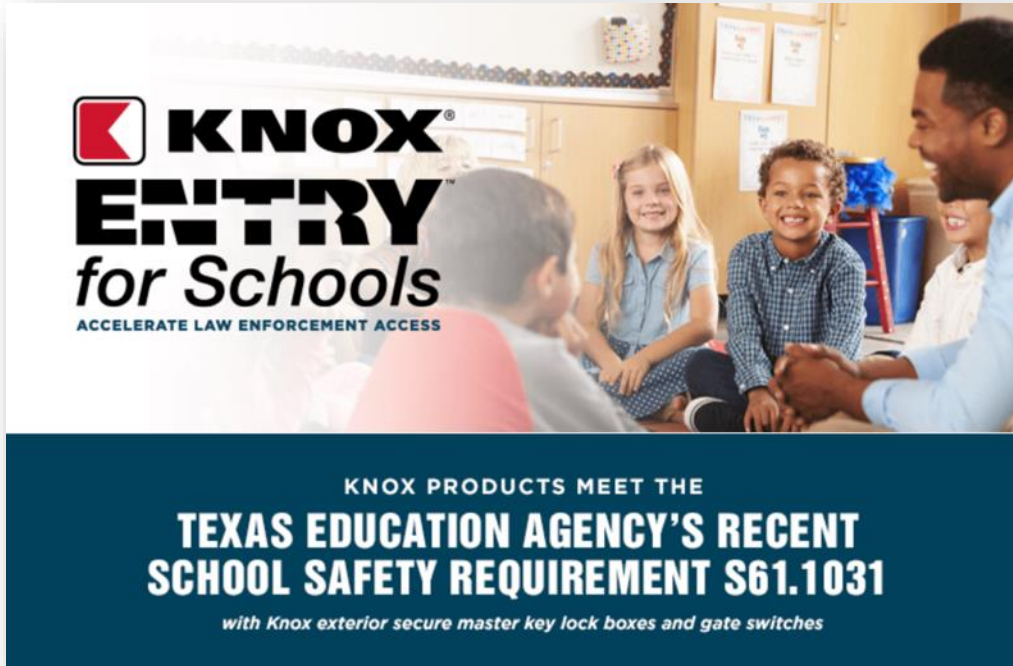




TAC 61.1031

Opportunity



KNOX[®]
ENTRY
for Schools
ACCELERATE LAW ENFORCEMENT ACCESS

KNOX PRODUCTS MEET THE
**TEXAS EDUCATION AGENCY'S RECENT
SCHOOL SAFETY REQUIREMENT S61.1031**
with Knox exterior secure master key lock boxes and gate switches

- TEA Requirement S61.1031
- Deadline to have contractor procured and a final timeline to complete all work required – *August 2023*
- Knox products meet requirement

Key Management

SINGLE KEYWAY



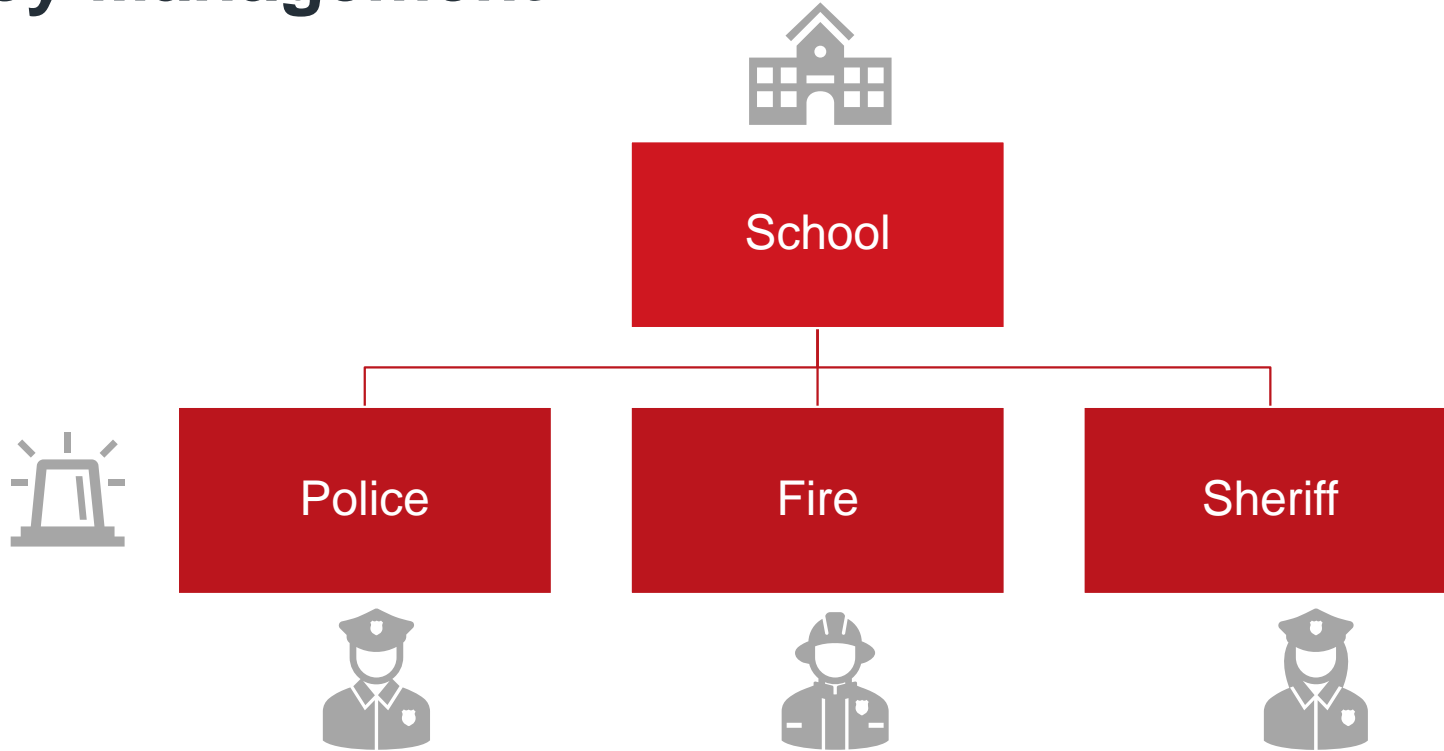
- One key for all parties
- Cheapest option, higher risk

DUAL KEYWAY



- One key for school employees
- One key for all other entities
- Set up as independent or dependent

Key Management



Exterior Products



KnoxVault® 4400

Meets the requirement in the school safety standard rule for exterior secure master key lock boxes

- Provides law enforcement with a combination of 50 keys, access cards, floorplans, and other entry items
- Each individual school controls the key, the box contents, and its exterior install placement to ensure optimal tactical response during emergencies
- KnoxVaults are a secure high-capacity access lock box that does not require wiring or batteries
- During active shooter incidents immediate entry into locked exterior doors is simple and quick



Knox Gate & Key Switches™

Meets the requirement in the school safety standard rule for gated secured areas needing emergency access

- Open electrical and manual gates in secured areas without delays, force, or damage
- Single or dual lock options
- Multiple agency labeling
- With or without mounting plates

Interior Product



Document Cabinet

Once inside provide plans and additional keys

- Provides law enforcement with a combination of 200+ keys, access cards, floorplans, and other entry items
- Each individual school controls the key, the box contents, and its placement to ensure optimal tactical response during emergencies

Knox eLock System™



KeySecure® 6



Knox KeyDefender™



KnoxDock™



Knox eKey™



KnoxConnect™



Knox eLock Products



Cross-Functional Access

Unlimited Access Points



- Share access with broad range of users
- Complements existing access control

Police



Fire



Sheriff



Facilities



Staff



Contractors



Maintenance



Cleaning Crew



Knox eKey™

Durable

- Operable in the harshest conditions and environments

Secure & Reliable Access

- Code required to activate key
- Multiple layers of security
- Charge last up to 7 days

Accountability

- Collects and reports lock core audit info via KnoxConnect

Inoperable if Lost or Stolen

- Includes an expiration feature that deactivates the key



Key Control & Retention

Device Options

- Heavy duty/multi-user
- Vehicle-compatible
- Desk grade

Ease of Use

- Options to programs, charge and retrieve audit trails from various workspace and vehicle environments

Flexible

- Dynamically issues and returns eKey to/from a user in real time

Secure

- PIN-protected to enable access and control usage
- Release and use transactions are recorded by time and user



Knox KeyDefender™



KnoxDock™

KnoxLock™ Core

No Power Required

- No batteries or external power source required

Durable

- Rugged-built stainless steel design, resistant to physical stress and extreme weather conditions

Low Maintenance

- Designed to protect against dust, dirt and water for uninterrupted access
- No contacts to clean

Trackable

- Tracks and stores box openings and closings by user, date and time



How to Register

SCHOOL REGISTRATION FORM

PLEASE NOTE: The School Registration Form must include a physical signature.

A thumbnail image of the 'SCHOOL SECURITY REGISTRATION FORM'. The form has a red header with the title. It contains several sections with various fields for text entry, checkboxes, and a signature line. The Knox logo is visible at the bottom.

Download

CUSTOMER INFORMATION FORM

A thumbnail image of the 'CUSTOMER INFORMATION FORM'. The form has a red header with the title. It contains several sections with various fields for text entry, checkboxes, and a signature line. The Knox logo is visible at the bottom.

Download

Completion & Submittal of Registration Form to Knox is required prior to placing an initial order.

- The School Registration Form initiates the assignment of a restricted key control system. When a school district is purchasing on behalf of its schools, only one form is required; purchases for a single private school, or single charter school, also requires completion of this form.
- A single Customer Information Form is required when a school district is purchasing on behalf of its schools, and it is required for each individual private school, or single charter school.